



NATURAL SELECTION

MAKE A DIFFERENCE

Travel that Matters

Our Conservation • Our Community • Our Commitment

— POSITIVE IMPACT 2024 —



Our Story

AT NATURAL SELECTION, WE ARE ALL ABOUT CONSERVING LAND, PROTECTING WILDLIFE AND IMPROVING THE LIVES OF PEOPLE LIVING SUSTAINABLY IN WILDLIFE AREAS OF AFRICA. WE DO THIS THROUGH A CONSERVATION TOURISM MODEL THAT FUNDS EXCELLENT CONSERVATION AND OUTREACH PROGRAMMES THROUGH OUR PORTFOLIO OF UNIQUE LODGES. VISIT AND KNOW THAT YOU ARE MAKING A DIFFERENCE SIMPLY BY BEING THERE.

Our founders, Dave, Jen, Colin and James all began their careers as guides in the bush, and for the last 30 years they have been pioneering unique safari experiences across Southern Africa’s least explored places and spaces, carrying out wildlife research or changing the wildlife conservation landscape.

In 2016, united by the desire to help reshape the role that nature-based tourism plays in conserving and protecting Africa’s last great wild places, they started Natural Selection. Since its inception they have built-up partnerships with others who are also wholly committed to conservation.

Today we are a conservation and nature-based tourism company offering a collection of 24 owner-operated safari camps and lodges across Southern Africa and we believe that together with our partners and guests, we are making a positive impact on the remote wild places in which we operate.

Our Purpose

OUR PURPOSE IS SIMPLE.

As a business we aim to be a force for good in the protection of natural habitats and to provide characterful experiences in nature that rekindle a deep love and care for wild places.





Our approach to making a Positive Impact

AT NATURAL SELECTION WE TAKE AN ECOSYSTEM WIDE VIEW
ON THE PROTECTION AND EXPANSION OF WILD PLACES.

Equally important is the **socio-economic impact** and upliftment our operations have on local communities who are part of the unique landscapes in which we work. This dual conservation and **community focus** helps create economic value in protecting wilderness areas and minimising human-wildlife conflict.

At the heart of all of our supported projects is the importance of **sustainable partnerships** between tourism businesses, communities, government and NGO's.

We are also committed to **minimising our operation's footprint** on the environment. Our newly built camps use local materials, recycled materials and renewable energy. As much as possible, each camp supports **local environmentally-friendly** enterprise and carefully manages and minimises waste.

*Natural Selection's positive impact projects
are guided by our mission to aid in the lasting
protection of wildlife while uplifting communities
living sustainably alongside wildlife areas.*



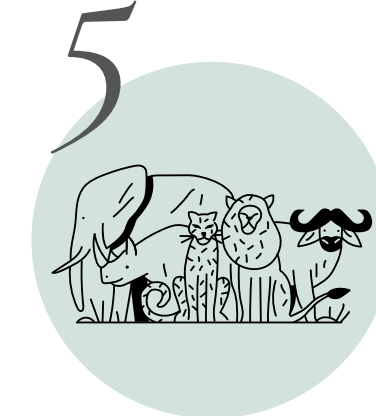
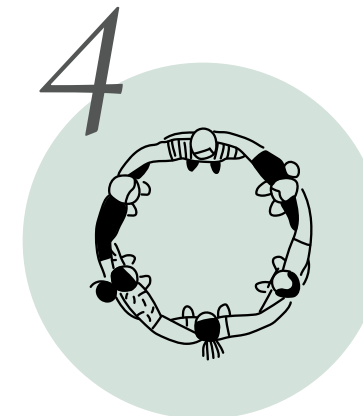
MAKING *A difference...*

Here's HOW WE MAKE A Difference

WE MAKE A DIFFERENCE BY...

1. Supporting conservation and community outreach initiatives.
2. Bringing tourism value to important conservation areas, often overlooked.
3. Putting a spotlight on conservation issues and being a part of the solution.
4. Working together to create important conservation and community partnerships.
5. Helping to expand wildlife areas.
6. Being custodians of over 1,600,000 hectares of land.

OUR APPROACH



PROJECT *and* *Initiative* SUPPORT

WE MAKE A DIFFERENCE BY WORKING CLOSELY WITH
STAKEHOLDERS AND OUR AMAZING NGO PARTNERS TO DEVELOP
NEEDED CONSERVATION AND COMMUNITY PROGRAMMES OR TO
ENSURE THE CONTINUATION OF EXISTING SUCCESS STORIES.

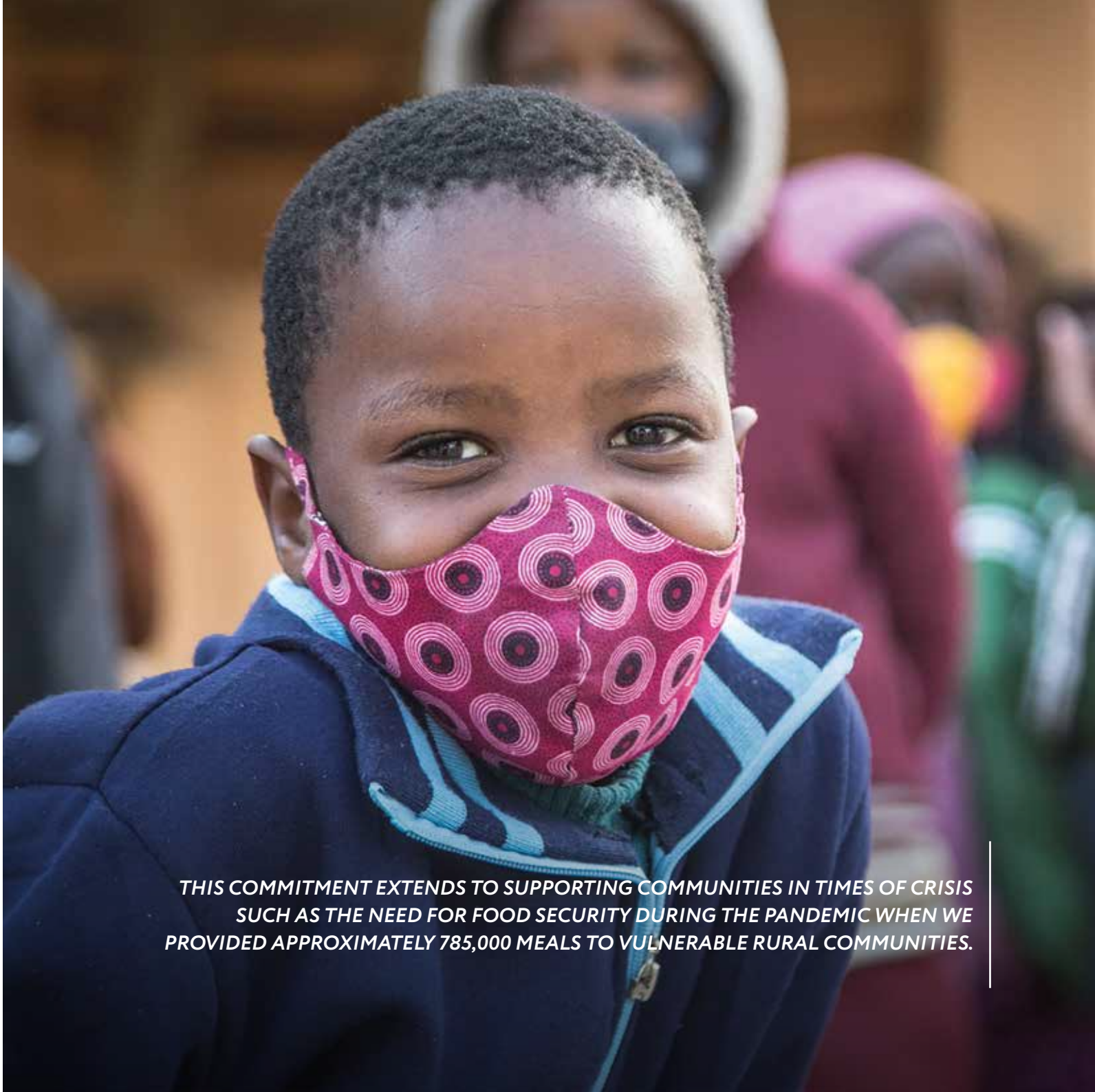
Since 2016, we have funded the development, implementation or
continuation of 119 conservation and community initiatives:

BY COUNTRY

76 in Botswana
39 in Namibia
3 in South Africa
1 in Madagascar

PROJECTS SPLIT

73 Community Outreach
46 Wildlife Conservation



THIS COMMITMENT EXTENDS TO SUPPORTING COMMUNITIES IN TIMES OF CRISIS
SUCH AS THE NEED FOR FOOD SECURITY DURING THE PANDEMIC WHEN WE
PROVIDED APPROXIMATELY 785,000 MEALS TO VULNERABLE RURAL COMMUNITIES.

How we fund POSITIVE IMPACT Projects

- WE CONTRIBUTE 1.5% OF A GUEST'S STAY IN OUR LODGES TOWARDS COMMUNITY BASED WILDLIFE CONSERVATION, WILDLIFE RESEARCH AND MONITORING, AND CONSERVATION EDUCATION. THIS DONATION IS MANAGED BY AN INDEPENDENT NON-PROFIT ORGANISATION.

1.5%

- OUR LODGES HAVE A PER PERSON PER NIGHT CONSERVATION, COMMUNITY AND RESERVE FEE THAT FUNDS LAND PROTECTION, LOCAL VILLAGE UPLIFTMENT AND RESERVE MANAGEMENT.

CCR FEE

This secures funds that are crucial for protecting wildlife, wildlife habitat, and supporting communities in individual areas of operation.

- DONORS SUPPORT KEY PROJECTS THROUGH THE NATURAL SELECTION FOUNDATION.

DONATIONS

We firmly believe that conservation based tourism plays an important role in the protection of wilderness areas around the globe, particularly in Africa. That's why 1.5% of every booking at our lodges, in addition to a per person per night Conservation, Community and Reserve (CCR) Fee, goes directly to protecting wildlife, wildlife habitat, and supporting communities who live alongside wildlife.

**WE MAKE SURE THAT
EVERY VISITOR'S
TRIP COUNTS...**

Some of our
CONSERVATION PROJECTS
& Community Work...





AREA: Etosha Heights Private Reserve / Sesfontein Conservancy / Khwai Private Reserve
PARTNERS: Etosha Heights Special Rangers / Sesfontein Rhino Rangers / KPR Rhino Rangers
CAMPS: Safarihoek, Safari House, Etosha Mountain Lodge / Hoanib Valley Camp / Tuludi, Sable Alley, Little Sable, Hyena Pan, Skybeds

ANTI-POACHING

Protecting our wildlife through dedicated anti-poaching units, 24/7.

\$330 USD pays one anti-poaching ranger for one month.

\$500 USD buys one camera trap for monitoring wildlife.

\$2225 USD buys one high tech outdoor surveillance camera.

\$715 USD Garmin InReach Device (including annual subscription).

\$9700 USD Thermal Drone.

\$ 5300 USD Live Feed Camera Trap for real time incursion / incident monitoring.

OUR NAMIBIA ANTI-POACHING UNITS

While media attention to the rhino poaching crisis has tapered off, it is still very real in Africa and our anti-poaching team at Etosha Heights Private Reserve are on the ground 24 hours a day, dedicated to protecting the rhinos and preventing any illegal hunting in the reserve. It is a relentless, never ending effort to protect the dwindling populations of these beautiful creatures.

Rangers are supported with more and more advanced technology for detecting threats and monitoring rhinos, which requires continual upgrading and training on the reserve. Donations have made some of this possible and we are forever grateful to those who have rhino welfare in their hearts. In the Sesfontein Conservancy, close to our Hoanib Valley Camp, we also assist the community Rhino Rangers on an ongoing basis with equipment and food rations. This helps the team to continuously protect these iconic animals, for future generations to enjoy.

OUR BOTSWANA ANTI-POACHING UNITS

Concerned about the wildlife in Khwai Private Reserve, we have been equipping rangers with the tools they need to be more effective on the ground.

This includes binoculars, rain suits, cameras, two-way handheld radios and tablets for recording sightings. Some of our rangers have also taken to two wheels, using motorbikes to help patrol inaccessible areas more effectively.

Ranger training has been key in successfully looking after this very large reserve. Not only are our rangers trained to patrol, but they know how to collect population data, manage invasive species and even protect endangered trees.





AREA: Makgadikgadi / Khwai Private Reserve / Maun / South Western Okavango Delta / Northwest Namibia.
PARTNERS: Coaching Conservation / Elephants for Africa / Giraffe Conservation Foundation
CAMPS: Meno a Kwena, Jack's Camp, San Camp, Camp Kalahari, Planet Baobab / Tuludi, Sable Alley, Little Sable, Hyena Pan, Skybeds / Mokolwane / Thamo Telele / All NS Namibia Camps

CONSERVATION EDUCATION FOR CHILDREN

Inspiring environmental responsibility in children.

\$90 USD pays for one child to participate in a two day Coaching Conservation educational programme.

\$825 USD buys supplies for one year of the Moreomaoto Village Kids Environmental Club.

\$8000 USD funds the transportation for one year of KEEP field excursions for 3000 kids.

THE KHOMAS ENVIRONMENTAL EDUCATION PROGRAMME (KEEP)

Few projects are more exciting than those that open up the world of conservation to eager young minds, and this one does exactly that.

The KEEP programme (designed and implemented by the Giraffe Conservation Foundation (GCF) in Namibia), focusses on urban primary schools within impoverished areas, and addresses the need to connect these children to nature and to develop an interest in the environment and in becoming responsible members of local and global communities.

Integrated with the national school curriculum, the programme includes hands on experience in the bush, allowing the beauty of Namibia to captivate these young minds. The impact and excitement from the young participants is almost tangible.

COACHING CONSERVATION OUTREACH PROGRAMME

Coaching Conservation (CC) is a conservation outreach programme for children, which fosters self-respect, respect for each other and respect for wildlife and the environment.

Using the characteristics of different species, the programme inspires learning in fun, active games from soccer to tag to ring toss. Natural Selection has partnered with CC to support its work in rural areas. By linking conservation to core values through games, the children are able to personally connect with the environment around them. The young international visitors can then begin a long-term relationship with Botswana and its wildlife.

ENVIRONMENTAL CLUB

The villages near Meno a Kwena fall within one of the highest human-wildlife conflict zones in Botswana. In order to help both humans and wildlife, we work alongside local NGO, Elephants for Africa (EFA), to help improve the livelihoods of the Moreomaoto Village residents and children, who live next to the Makgadikgadi National Park.

Meno a Kwena, in continuation of their long standing support of the village, together with EFA deliver a monthly Environmental Club with lessons and excursions into the park. It's hard to believe that many of the children living in the village were not even aware that they lived next to a National Park.

Understanding this sheds light on the relevance of the wildlife that pass through the village and you never know, it might just inspire some future conservationists!

Natural Selection: Make a Difference
PROJECTS





AREA: Northern, Okavango Delta
PARTNER: EcoExist
CAMPS: Duke's Camp, Duke's East, Uncharted Expeditions Camp

ELEPHANT EXPRESS

Elephant Express buses in the Okavango Delta panhandle in Botswana.
\$350 USD pays one bus driver for one month.
\$1000 USD funds one month of operational expenses for one bus.
\$48,400 USD buys one new bus.
\$1000 USD cost of fuel per month to run 3 buses.
\$1000 USD expected bus maintenance for 3 buses per month.
\$5375 cost of materials to erect 3 fuel tanks for a fuelling facility helping with logistical challenges in these remote areas.

Against all odds, certain areas of the Okavango Delta have experienced a localised increase in elephant numbers over the past 15 years. This is largely attributed to elephant movement from less hospitable areas.

Good news for photographic tourists, but for local villagers the increase is potentially devastating. Agricultural land is increasingly vulnerable to elephant raiding and humans are ever more at risk of fatal encounters.

To combat this human-wildlife conflict together with our partners, we have funded three “Elephant Express” buses to safely transport school children through areas prone to elephant encounters.

In partnership with EcoExist who identified ‘elephant highways’ (routes where humans and elephants encounters are most likely to occur) and who also identified the need for safe transport, we have been successfully running these buses for four years with the help of the Okavango Community Trust.

We are seeing each year that school attendance has significantly improved due to the buses and therefore academic performance has gone up. We are now looking to add one more bus to the fleet to ensure all kids in need can get to school on time.





AREA: Maun, Botswana
PARTNER: Giraffe Conservation Foundation (GCF)
CAMP: Thamo Telele

GIRAFFE CONSERVATION AT THAMO TELELE

Two giraffe conservation initiatives, led by two giraffe specialists.
\$90 USD pays for one DNA sample analysis.
\$750 USD buys 100 sampling darts.
\$6500 USD funds interactive conservation educational materials in the centre.
\$30,000 USD funds the building of a giraffe and environmental conservation education facility.

We love giraffes so much that we thought we'd put together a team of dedicated giraffe lovers, in the hope to educate and gain a better understanding of these iconic African animals and what their current Botswana status is, as well as any future threats they may face.

This is happening at Thamo Telele, our safari-style camp set on a 250-hectare private game reserve located on the outskirts of the iconic safari town of Maun, where we have 23 resident giraffe (and counting) that we work with on a daily basis. Thamo Telele actually means 'long neck' in Setswana.

Here we are facilitating two giraffe conservation initiatives. The first being a Giraffe Education Programme for visitors and local people, and the second a Giraffe Genetics Programme.

OUR GIRAFFE EDUCATION PROGRAMME

This programme has established an up close giraffe educational experience for visitors and is planning to establish a conservation education centre to provide meaningful and impactful conservation education experiences for local children. Both focus on increasing awareness around nature conservation as well as the plight of giraffe.

OUR GENETIC TESTING PROGRAMME

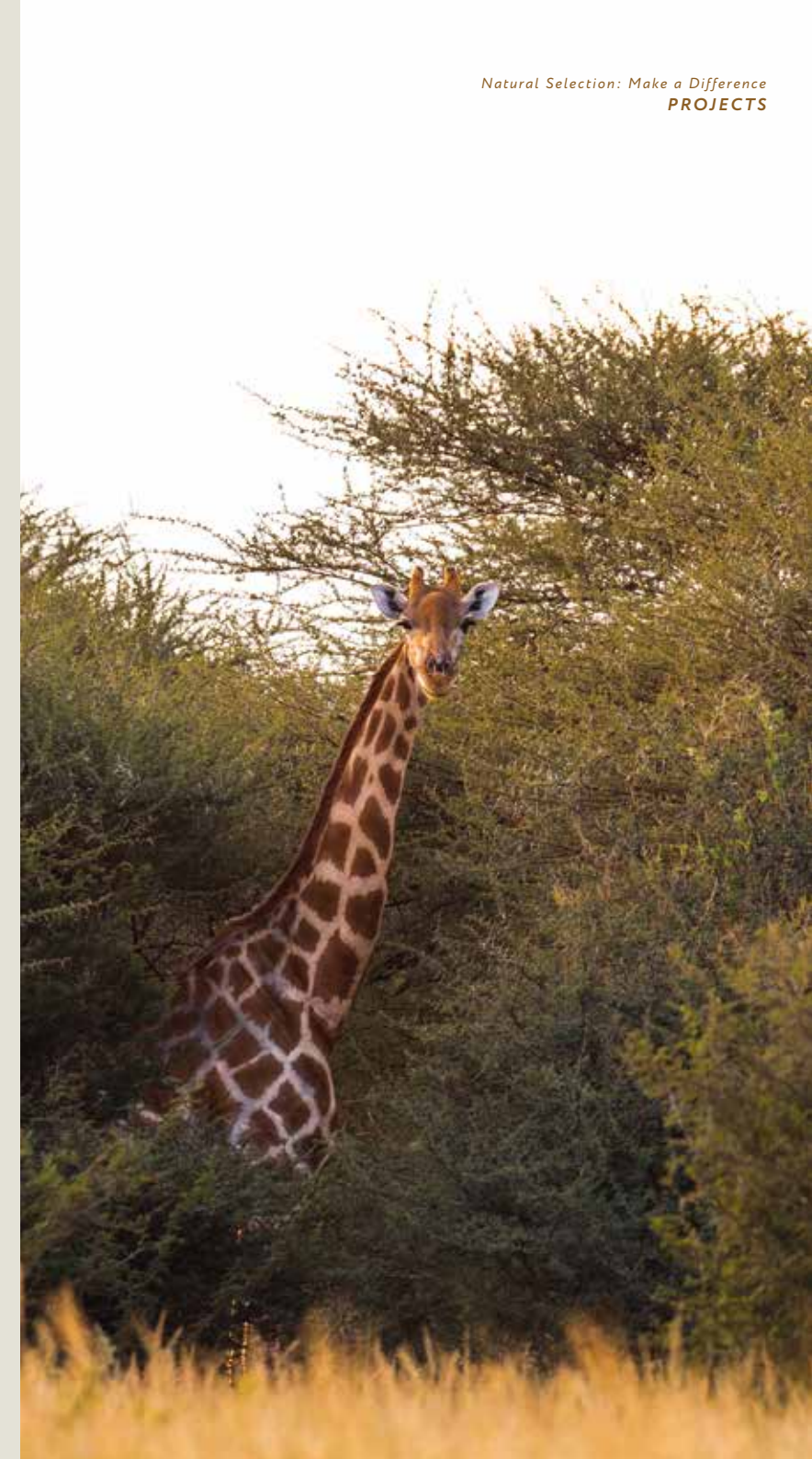
This programme aims to assess the numbers, distribution, and taxonomic status of giraffe in Botswana, through genetic testing. It will seek to evaluate the viability of giraffe conservation translocations inside or outside the country and provide input into the currently drafted Kavango Zambezi Transfrontier Conservation Area (KAZA TFCA) Giraffe Conservation Strategy.

We support much needed research into the taxonomy and distribution of giraffe in Botswana working with the **Giraffe Conservation Foundation** (GCF).

For the last 16 years GCF has collected genetic samples from giraffe throughout Africa for a taxonomic assessment.

This work has helped to better understand how many types of giraffe there are and where they live, but most importantly it guides conservation management decisions for giraffe in all of Africa and where we should focus urgent conservation actions.

Two of GCF's Namibia team joined us in Botswana to spearhead the program and things are looking up!





AREA: Northern Botswana / Northwest Namibia
PARTNERS: CLAWS, The Desert Lion Conservation Project (via Tosco), IRDNC
CAMPS: Duke's Camp, Duke's East, North Island Okavango, Uncharted Expeditions Camp / Shipwreck Lodge, Hoanib Valley Camp

HUMAN-LION CONFLICT MITIGATION

Creating a conservation landscape in which both livestock and wildlife can thrive.

\$110 USD buys one month of fuel to track lions.

\$3300 USD funds one lion satellite collaring and one year of satellite service fees.

\$600 satellite costs for 19 Early Warning Loggers, 2 Remote Alert Units, and 14 Rovers per month.

OKAVANGO LIONS

Over 50 lions in 13 prides have been identified moving through the northern panhandle of the Delta. Many of these live on the fringes of the Delta where they are persecuted, usually due to their predatory response to livestock.

For 5 consecutive years, we have been supporting CLAWS (Communities Living Among Wildlife Sustainability) and the communal herding programme to safeguard cattle, create employment, reduce retaliatory killing of lions, and restore overgrazed landscapes. The programme focuses on the villages of Eretsha and Gunotsoga.

CLAWS plays an integral part in protecting both lions and livestock. By collaring and tracking lions and facilitating a return to traditional herding practices, whereby a herder accompanies livestock, lion-livestock interaction is reduced and the perceived conflict between lions and farmers can be alleviated.

This initiative combines herds to reduce the costs of herding per household and achieves two goals: reducing retaliatory killing of lions, and improving grazing land for livestock herders through rotational grazing.

THE DESERT LION EARLY WARNING CONFLICT MITIGATION SYSTEM

The lions in northwest Namibia are a uniquely desert adapted population facing numerous challenges. The project is implementing an automatic monitoring and early warning system, which reduces conflict with livestock herders. Using satellite collars and communications software, the system warns farmers of nearby lions so herders can corral livestock and prevent predation. Natural Selection supports the Desert Lion Early Warning Mitigation project and Lion Ranger programme in the hope that human-wildlife-conflict is mitigated. Tosco, the Desert Lion Project and the Integrated Rural Development and Nature Conservation (IRDNC) are integral to the success of these initiatives.





AREA: Makgadikgadi, Kalahari Desert
PARTNERS: Round River Conservation
CAMPS: Jack's Camp, San Camp, Camp Kalahari, Planet Baobab, Meno a Kwen

MAKGADIKGADI LARGE MAMMAL MIGRATION CONSERVATION INITIATIVE

Supporting Africa's longest large mammal migration.
\$12,500 USD funds 3 years tuition for a local research student registered with the Okavango Research Institute.
\$550 USD buys one camera trap for waterhole monitoring.
\$550 USD lab fees for a month for our Surface Water and Climate Stage study.
\$1200 Cost of an Elephant Collar to support the Elephants For Africa collaring project.

Before the 1960s, the area of north-eastern Botswana around the Makgadikgadi National Park and the Kalahari Desert held the longest and possibly the largest migration of zebra and wildebeest in Africa. It was, however, abruptly cut short by land use changes requiring extensive fencing. Amazingly, the migration has re-emerged over the last decade, pushing through old fences and small-hold farms.

Today, all our Makgadikgadi properties are well known for the annual migration they host, with visitors eager to witness the charge. What visitors don't see is the work being carried out on wildlife and cattle movements, waterhole usage, human-wildlife conflict zoning and conflict mitigation efforts. Through this multifaceted conservation program, we aim to un-restrict migratory movement

by working alongside local communities and all stakeholders to develop land use plans that benefit all and allow this epic migration to flourish.

IMPACTS OF SURFACE WATER ON HERBIVORE ECOLOGY

The mesmerising land is becoming increasingly extreme due to the effects of climate change, so we have researchers on the ground ready to implement change. The Impacts of Surface Water on Herbivore Ecology and Socio-Ecological Knock-on Effects Project works to better comprehend the direct and indirect consequences of surface water availability in an area like this. In particular, the project considers the effect on the ecology of large herbivores and the knock-on effects on vegetation, landscape-scale connectivity and human-elephant conflict.



Natural Selection: Make a Difference PROJECTS



AREA: Khwai Private Reserve, Botswana
PARTNER: Naletsana Charity
CAMPS: Tuludi, Sable Alley, Little Sable, Hyena Pan, Skybeds

MARIA RAMSDEN LEARNING CENTRE

Bettering the lives of vulnerable members of the Khwai village community.
\$30 USD will feed one child for one month.
\$350 USD pays for one teacher's salary for on month.

Originally called the Khwai Village Day Care Centre, the Maria Ramsden Learning Centre was created by Maria Naledi Ramsden and Sandra Rubins to better the lives of preschool children in Khwai Village, in Botswana.

Maria and Sandra worked closely with the Khwai community for many years, devoting their energy to bettering the lives of vulnerable members of the community, especially children of single mother led households.

Maria and Sandra co-founded their own charity, Naletsana, which joined forces with Natural Selection to run the Centre before Maria sadly passed. Renamed in her memory, the centre not only continues to provide a safe learning and playing environment, but also daily meals for young

children, including a high nutrient porridge each morning.

A new kitchen has been added and a garden has been built to assist with additional food provision. Teaming up with Rotary International (one of the largest service organisations in the world), we have equipped the vegetable garden with shade cloth, packets of seeds, a JoJo tank, a growing area and more. This can now provide fresh produce and lunches and will hopefully be a fruitful partnership moving forward.

We also cover the running costs of the learning centre and we are looking to donors to help fund the daily meals and eventually open the doors to weekend learning opportunities for adults.



Natural Selection: Make a Difference
PROJECTS



AREA: Khwai Private Reserve / Makgadikgadi / Maun / Etosha Heights / Hoanib Valley / Kwessi Dunes
PARTNER: Wild Shots Outreach
CAMPS: Sable Alley / Planet Baobab, Jack's Camp, San Camp, Camp Kalahari, Meno a Kwenä / Thamo Telele / Kwessi Dunes / Hoanib Valley Camp / Safarikoek, Safari House, Etosha Mountain Lodge

WILD SHOTS OUTREACH

*Conservation education through a lens.
\$650 USD cost for entry level mirrorless Canon camera.*

Wild Shots Outreach is an award winning NPO, with its most recent accolade being the International Gold Award from The Global Good Awards (2020). It is an immersive experience through which young adults from disadvantaged communities get to appreciate wildlife and wild places through the lens of a camera.

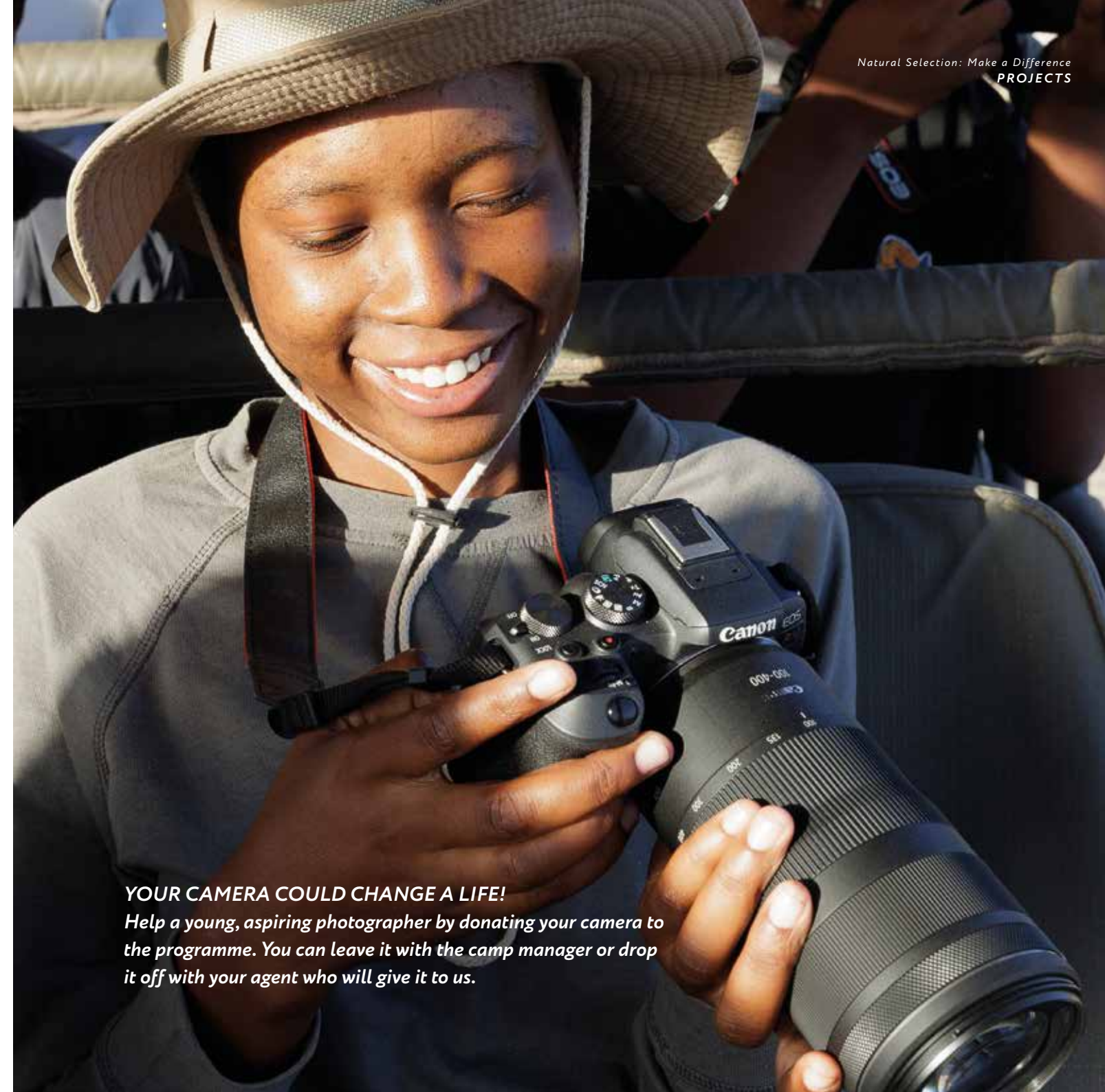
This experience goes some way to facilitating conversations around conservation, and hopefully shaping mindsets of the next generation of environmental stewards.

We are working closely with the Wild Shots Outreach initiative. Every year they run workshops at some of our camps. This initiative engages with unemployed youth, teaching them about conservation and nature through photography.

Apart from a better understanding and appreciation of wildlife and conservation, the objective of this initiative is to develop self-confidence, self-esteem, life skills and, of course, photographic skills.

In 2022, Wild Shots Outreach's Programme Director, Rifumo Mathebula, won the international CIWEM "Youth Environmentalist of the Year" and Mail & Guardian Greener Futures" Award. These prestigious awards recognise 'passionate, proactive individuals actively working towards positive environmental change with lasting impact.'

Wild Shots Outreach recently ran three workshops at our camps – Sable Alley, Planet Baobab, Jacks Camp and Meno a Kwenä. For all the participants this was the first time they had ever been on a game drive, let alone photographed a wild animal! More recently we have expanded this partnership into Namibia. Guests who wish to help this initiative can donate cameras on their next safari..



YOUR CAMERA COULD CHANGE A LIFE!

Help a young, aspiring photographer by donating your camera to the programme. You can leave it with the camp manager or drop it off with your agent who will give it to us.



AREA: Moremi Game Reserve
PARTNER: Botswana Predator Conservation
CAMPS: Tawana

BIOBOUNDARY PROJECT

Evaluating elephant repellents to mitigate HEC under multiple contexts and circumstances.

\$175 USD to monitor elephant responses to repellents under test.

\$50 USD to protect one camera trap from the elephants.

When humans and elephants compete for space and resources, Human Elephant Conflict (HEC) is inevitable. The high numbers of elephants and high levels of human-elephant conflict among subsistence farmers in northern Botswana provide a uniquely challenging environment for HEC mitigation. Crop raiding, loss of food security and income, destruction of infrastructure and even mortalities are very real threats; finding a solution is critical to creating an environment of coexistence.

To this end, Natural Selection has recently funded the Botswana Predator Conservation (BPC) BioBoundary Project. They are investigating the efficacy of plant-based airborne elephant repellents to help protect crops and infrastructure. This is following the discovery that a readily available, safe and natural product is a powerful repellent to elephants.

This provides the first alternative to chilli peppers, and strongly suggests that other repellents may be waiting to be discovered.

Camera trap videos have shown how the scent of a commercial essential oil has stopped elephants from passing through a gap in a fence even though they were on an established elephant commuting path. Similar reactions have also been observed with predator repellents.

The hope is that BPC are able to develop an inexpensive low-tech means of dispensing repellents, based on locally available materials and optimising repellents deployment for various applications. Ultimately fostering an environment for better co-existence.





AREA: Khwai Private Reserve / Makgadikgadi / Moremi Game Reserve
PARTNER: Women Against Rape
CAMPS: Tuludi, Sable Alley, Little Sable, Hyena Pan, Skybeds / Meno a Kwena / Tawana

MMOGO CENTRES FOR COMMUNITY DEVELOPMENT

"Mmogo" in Setswana means "Together".

45,000 USD will pay for the building of one 8m x 6m centre.

750 USD will pay for 20 chairs.

200 USD will pay for the printing of educational material for one centre for one year.

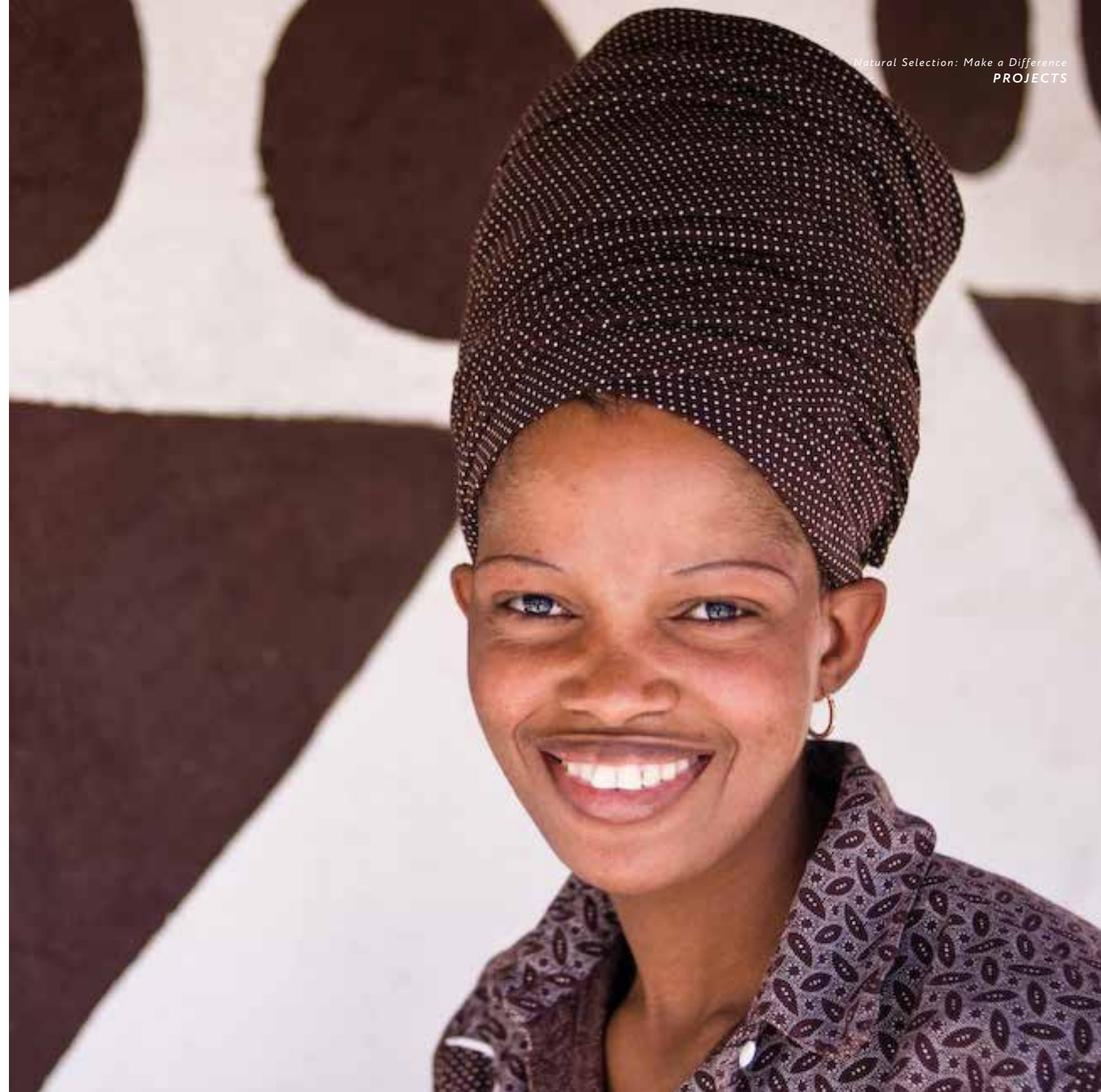
In this new programme we are establishing centres for development, initially focusing on two key areas of need in rural areas of northwest Botswana: early childhood development and the upliftment of women.

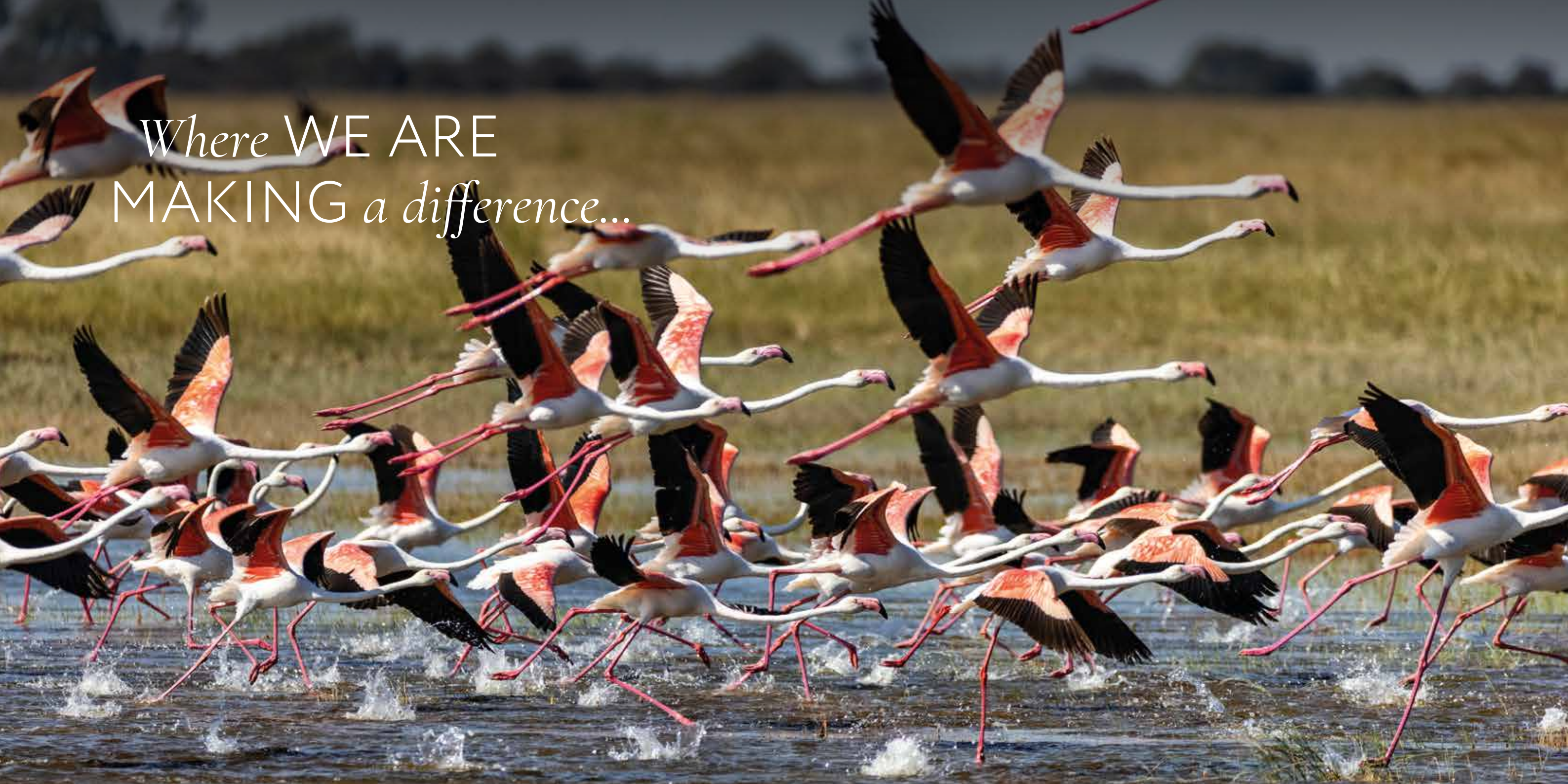
In Shorobe, we have started with the Learning Tree Centre for children between the ages of 3-5. This centre opened in conjunction with Tawana Lodge on the first of May 2024. The centre aims to provide foundations for early learning and nutrition.

By the end of 2024, this centre will also host educational activities for women in the late afternoons. This will include not only skills development but also awareness of rights, information on sexual health, and a connection to opportunities for additional training and future employment.

In Moreomaoto Village, this programme is giving women a chance to be financially independent by becoming self-employed. Here they are taught how to earn their own income, get more involved in the community, invest in their health care, and send their children to school.

By selling their beautiful arts and crafts, this initiative also empowers these rural women to gain financial benefits from conservation, while helping to preserve critical corridors for wildlife through these creative and entrepreneurial initiatives.





Where WE ARE
MAKING *a difference...*

The Areas where WE are MAKING A DIFFERENCE...

BOTSWANA

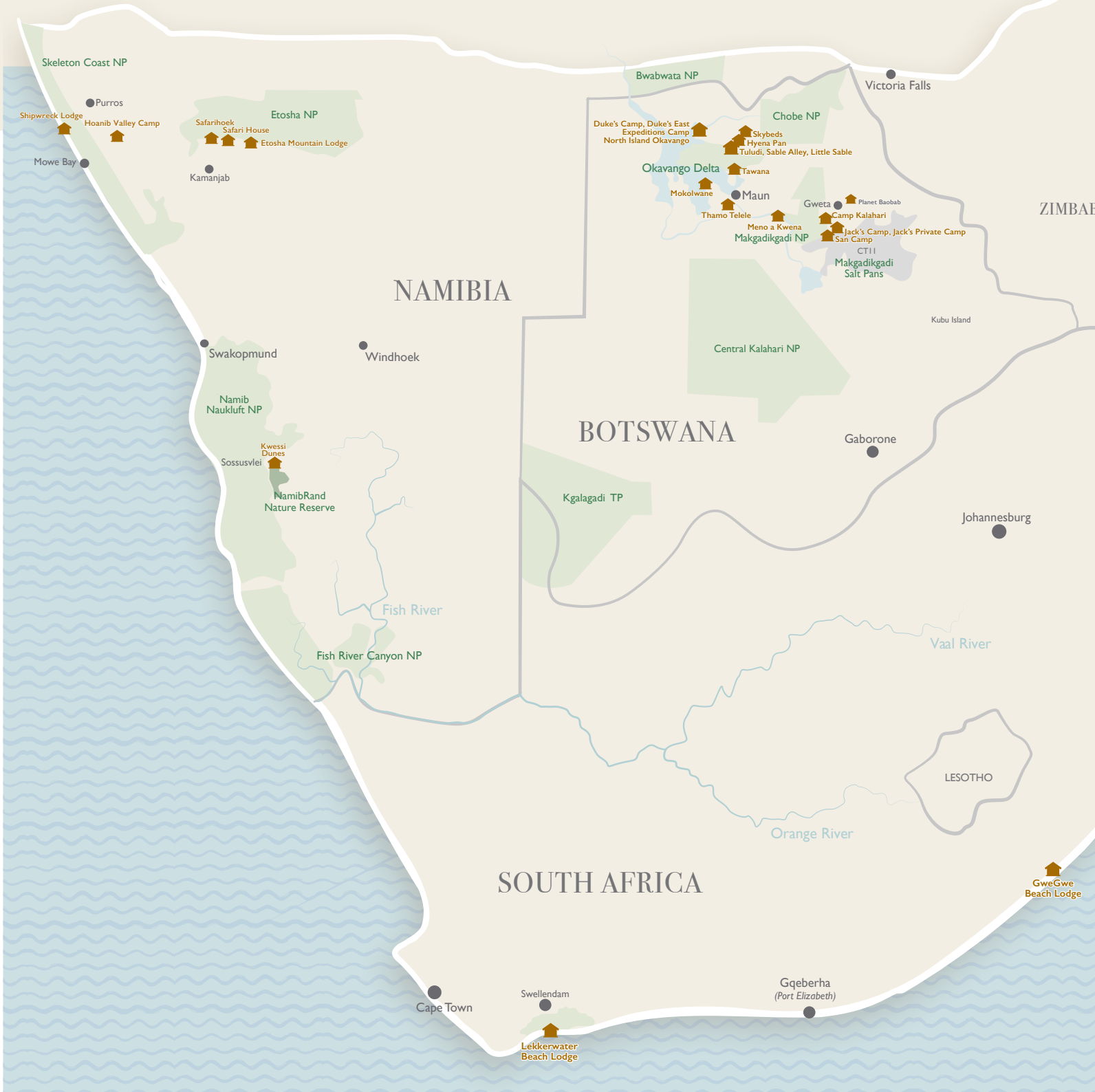
- Northern Okavango - NG12 + NG23A concessions
- Khwai Private Reserve - NG18 concession
- Southern Okavango - NG29 concession
- Makgadikgadi Pans - CT11 concession
- Meno a Kwena - Adjacent to Makgadikgadi National Park
- Thamo Telele Private Reserve - Maun
- Moremi Game Reserve - Okavango Delta

NAMIBIA

- NamibRand Nature Reserve
- Etosha Heights Private Reserve
- Hoanib Valley Koakaland
- Skeleton Coast National Park

SOUTH AFRICA

- De Hoop Nature Reserve



The Okavango Delta

NORTHERN OKAVANGO: NG12 + NG23A

Duke's Camp, Duke's East, North Island Okavango

- Coaching Conservation (CC)
- CLAWS - *Communal Herding for Livestock and Wildlife Protection*
- Elephant Express
- Mmogo / Coexistence Programme
- WildVision Eye Testing
- Early Childhood Development Centre
- Youth Development Trust

SOUTHERN OKAVANGO DELTA: NG29

Mokolwane

- Coaching Conservation (CC)



The Okavango Delta

KHWAI PRIVATE RESERVE: NG18

Tuludi, Sable Alley, Little Sable, Hyena Pan, Skybeds

- Coaching Conservation (CC)
- De-Snaring Sweep
- Khwai Village Sustainable Grass Harvesting
- KPR Anti-Poaching
- Maria Ramsden Learning Centre
- Wild Dog Disease Prevention
- Wild Shots Outreach
- Wild Dog Dispersal Study KPR
- Tree Protection Project

MOREMI GAME RESERVE

- Tawana
- BioBoundary Project
 - Mmogo Centres for Community Development



Makgadikgadi & Maun

MAUN / PRIVATE RESERVE

Thamo Telele

- GCF Giraffe DNA Sampling Botswana
- Giraffe Conservation and Education
- Coaching Conservation (CC)
- Wild Shots Outreach

MAKGADIKGADI

Jack’s Camp, San Camp, Camp Kalahari, Planet Baobab, Meno a Kwena

- Botswana Community and Conservation Initiative
- Coaching Conservation (CC)
- Kids Environmental Club
- EFA Elephant Collaring
- EFA Moreomaoto Village Living with Wildlife Strategy Workshops & Elephant Proof Fencing
- Makgadikgadi Large Mammal Migration Conservation Initiative
- Wild Shots Outreach
- Aardvark & Climate Change Project
- Community Borehole Project Gweta



Skeleton Coast, Kaokoland, Etosha & NamibRand

SKELETON COAST

Shipwreck Lodge

- The Desert Lion Early Warning Conflict Mitigation System
- Brown Hyena Project and Manager Support

HOANIB VALLEY, KAOKOLAND

Hoanib Valley Camp

- Elias Amzab School Support
- GCF Desert-Dwelling Giraffe Conservation
- Wildshots Outreach
- North West Namibia Ranger Support
- Purros Community Herding Support
- The Desert Lion Early Warning, Conflict Mitigation System

ETOSHA HEIGHTS PRIVATE RESERVE

Etosha Mountain Lodge, Safarihoek, Safari House

- Etosha Heights Anti-Poaching
- Etosha Heights Ranger Training
- Wildshots Outreach
- Etosha Heights Conservation Centre (EHCC)

NORTHWEST NAMIBIA

Other

- The Khomas Environmental Education Programme (KEEP)

NAMIBRAND

Kwessi Dunes

- Wildshots Outreach
- Local School Support



De Hoop Nature Reserve

DE HOOP NATURE RESERVE •

Lekkerwater Beach Lodge

- Alien Vegetation Clearing



SOUTH AFRICA

Cape Town

Swellendam

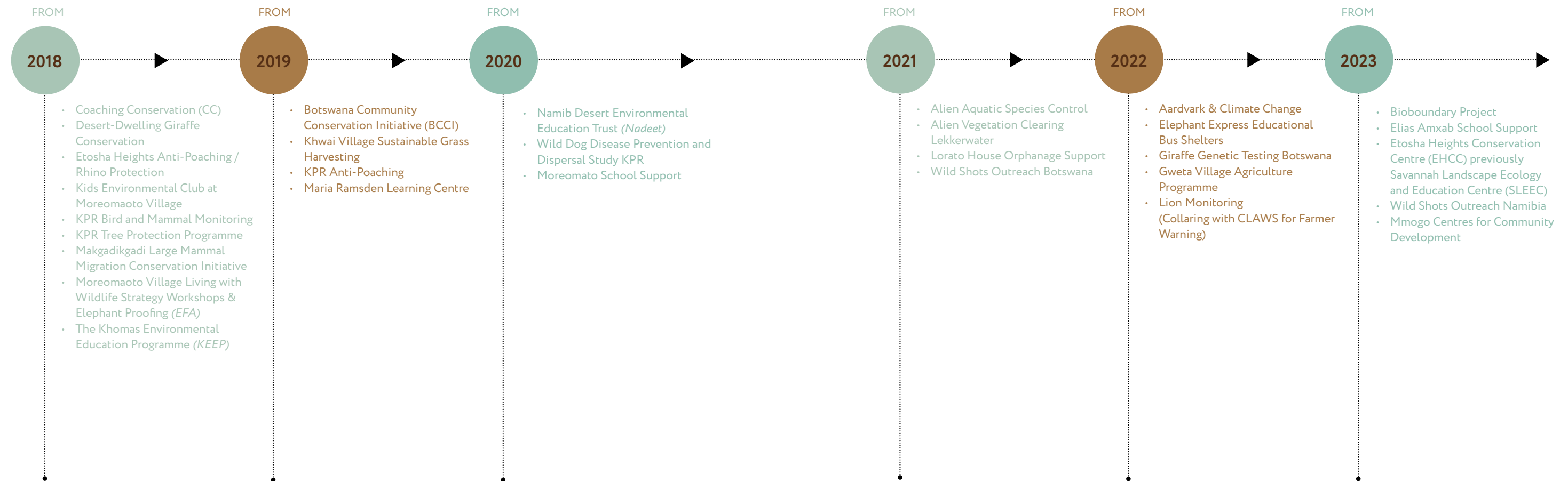
Cape Infanta

De Hoop
Nature Reserve

Lekkerwater
Beach Lodge

The START of Key Partnerships

OUR POSITIVE IMPACT TIMELINE LONG TERM PROJECTS



Additional SUPPORT by Year

OUR POSITIVE IMPACT TIMELINE SHORT TERM PROJECTS

2018

- Community Vehicle Support, Khwai
- Ganamub Solar Pump & Installation
- Otjikadavirongo School Donations
- Otjikadavirongo Solar Pump & Borehole Repair
- Toys from Recycled Materials Workshop for Kids & Single Moms, Khwai
- Specialist Guide License Training for Khwai Residents

2019

- Citizen-Science & Large Carnivore Monitoring
- Eretsha Educational Material
- Godikwa Trip for the Elders from Khwai
- Khwai Village Soccer Tournament Funding
- Khwai Village Elderly Support
- Khwai Village Solar Lighting
- Land Cruisers for Conservancy, Purros
- Leopard Population Dynamics & Conservation
- Maintenance & Home Repairs for Elderly, Khwai
- Moreomaoto School Photocopying Machines Purchase
- Nature Connect previously "Cape Town Environmental Education Trust (CTEET)"
- Off Road Driving & Guidance Assessment
- Sesfontein Boarding School Support
- Tomakas Village Water Installations
- VHF Radio Communication Tower for HWC Mitigation, Namibia
- WildVision Eye Testing
- Desert Lion Conservation
- Khwai Village Crafts & Culture Centre
- Tourism Training in Aus, Namibia

2020

- Covid Village Support
- Elephant-Proof Agricultural Fence Installation, Moreomaoto (EFA)
- Gweta Flood Relief Support
- Housing Support Gweta
- Khwai Village Latrines (Village Sanitary Project)
- Makgadikgadi National Park Waterhole Repair
- Mmogo/Coexistence Programme
- Moreomaoto Village Crafts
- North West Namibian Ranger Support
- Small Business Funding – KPR
- Leopard Monitoring with Camera Traps, Lekkerwater

2021

- Central Kunene Farmers' Emergency Relief
- Clothing Donations, Botswana
- Gweta Flood Relief Support
- IRDNC Solar Water Pump Project
- KPR Motorbike Equipment Support for Patrols
- Madagascar Nosy Bora Biodiversity Assessment
- Photography Internship, Gweta
- Purros - Community Herding Support
- Purros Community - Rhino Rangers Equipment
- Red Cross Assistance Gweta
- School Tech Devices Donations Gweta
- Sesfontein Covid Vaccination Campaign
- Sesfontein Recycling Project
- Sesfontein Waste Management

2022

- Borehole Project Gweta
- Bus Stop Shelter Gweta
- Cheetah Conservation Fund – Cheetah Release Support
- Computer Tablets & Support System in Beetsha Primary School
- De-Snaring Sweep, Khwai & Surrounds
- Elephants For Africa Collaring of Elephants
- Elias Amxab School Visit to Etosha National Park
- Gweta Primary School Latrines
- Gweta Primary School Donations
- Industrial Printer Donations – Gweta School Offices
- Orutjandja Kindergarten Support
- WildVision – Village School Eye Testing

2023

- Beetsha Child Protection Campaign
- Bruce Crossey Study
- Computer Tablets and Support System in Beetsha Primary School
- EFA Elephants for Africa Collaring Project Lab Analyses Support
- Erestha VDC Electricity Installation
- Etosha Heights Anti-Poaching Cameras
- Etosha Heights Anti-Poaching Rhino Training 2nd Phase
- GCF Giraffe Translocation Project
- Gweta Kutlwano Support
- Gweta Students Sponsorship
- KPR Tau Research Camp Solar Funding
- Kutlwano CJSS Prize Giving
- Ondao Mobile Primary School Food Donation
- Orutjandja Kindergarten Build
- Otjikondavirongo Conservancy, Rhino Cup League Donation
- Rural Solar Kit Project Eretshe
- Skeleton Coast Brown Hyena Project TOSCO
- Thermal Drone for Anti-Poaching Purposes

*A call for SUPPORT of
a NEW programme...*





AREA: *Northwest Namibia*
PARTNER: *Save the Rhino Trust*
CAMPS: *Hoanib Valley Camp, Shipwreck Lodge*

EXPANDING THE RANGE OF BLACK RHINOS IN NAMIBIA

HOW YOU CAN HELP THIS PROGRAMME.

\$250 USD Rhino ranger salary per month.

\$2700 USD All start up equipment for rangers (Incl.GPS, SMART device, Ultrazoom camera, binoculars, tents).

\$7000 USD Ranger food rations for a year.

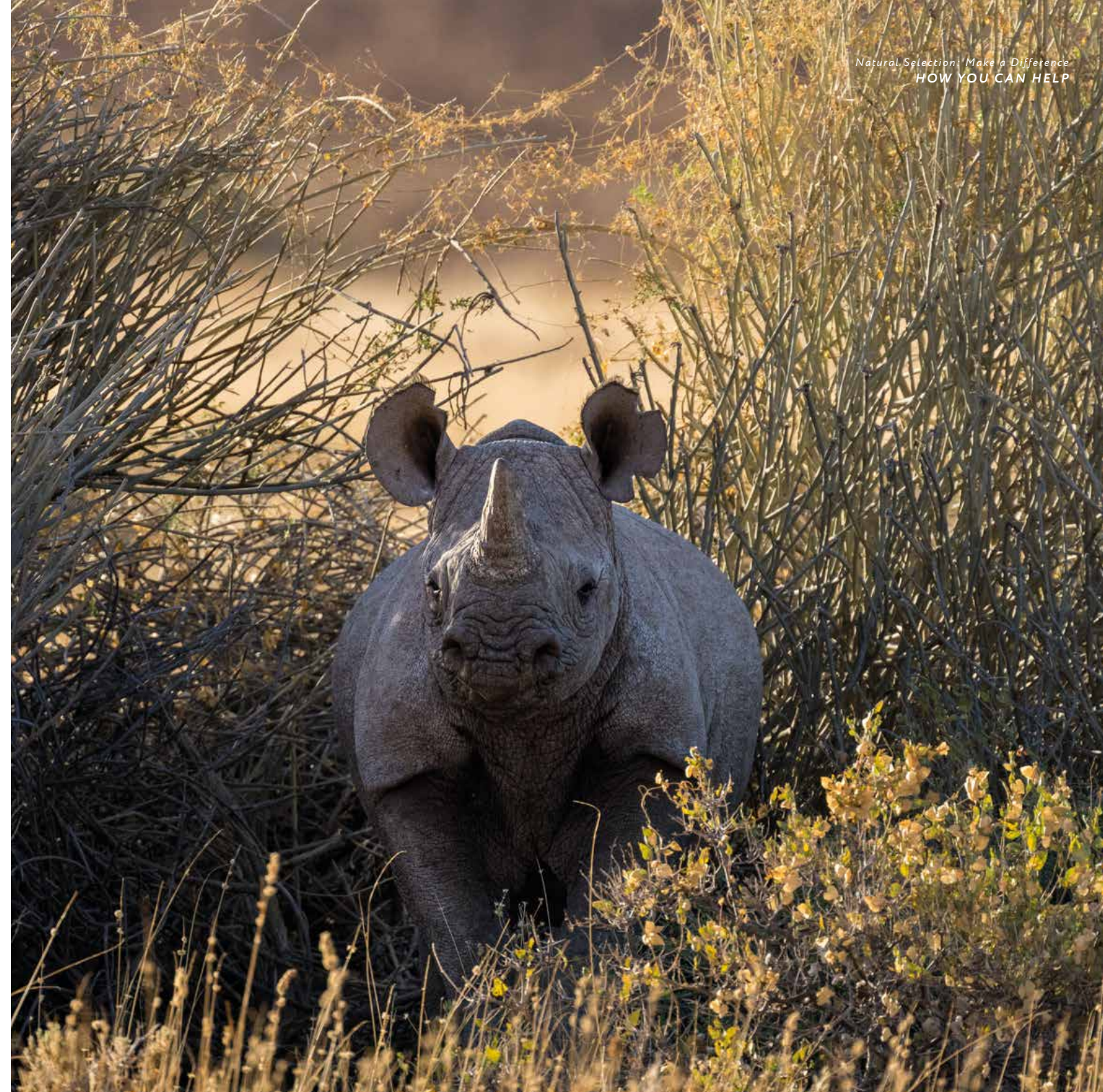
Northwest Namibia is home to the largest free-ranging population of black rhino in the world. Because they are free ranging, the monitoring and protection of these endangered animals requires a multi-faceted approach involving many stakeholders, one of them being Natural Selection. We are making a call for support for a black rhino reintroduction programme that will relocate females to expand the breeding range of this iconic species. Furthermore, the programme will reduce threats to these animals through long term monitoring of the rhinos in their new home.

The long term monitoring partner in this initiative is none other than Save the Rhino Trust, founded by the late Blythe Loutit in 1982. SRT have

successfully managed the security of the desert-adapted black rhino for decades and this range expansion programme will require their expertise and an expansion of their team. This includes engagement and empowerment of local people in rhino protection efforts, many of whom play a role in the ecotourism sector. Natural Selection's founders pioneered SRT's ecotourism partnership in 2003 with the late Blythe Loutit, the late Michael Hearn and SRT's current CEO, Simson Uri-Khob. We remain committed to SRT's mission and Natural Selection intends to sustain the monitoring of the reintroduced animals long into the future.

Join us on this mission to protect the desert-adapted black rhinos of Namibia.

Natural Selection | Make a Difference
HOW YOU CAN HELP



A large herd of oryx is captured in motion, running through shallow water. The animals are splashing, creating white foam and spray. They are all facing towards the right side of the frame. The water is a deep blue-grey color. The background is a vast expanse of water meeting a clear sky at the horizon.

Our FOUNDATION
& *how to* SUPPORT
OUR EFFORTS...



NATURAL
SELECTION
FOUNDATION

The Natural Selection FOUNDATION

NATURAL SELECTION STARTED WITH A VISION TO RESHAPE THE IMPACT OF NATURE-BASED TOURISM ON CONSERVING WILDLIFE AND WILD LANDS IN SOUTHERN AFRICA AND WE'VE SEEN THIS GOAL COME TO FRUITION.

Since 2016, Natural Selection and its operational partners have committed funds to approximately 119 wildlife conservation and community outreach projects in wildlife areas of Botswana, Namibia, South Africa and Madagascar. Twenty of these are programmes to which we have long term commitments.

All funds are managed by a separate non-profit entity, the Natural Selection Conservation Trust, with a board of experienced independent conservation scientists. With this guidance, we have and will continue to be an important vehicle through which local conservation needs receive attention and funding.

We are also fortunate to receive donations from inspired guests and lovers of African wildlife. Donations are received by the Botswana based Natural Selection Conservation Trust (NSCT) or via our sister entity in the US - a 501c3 registered charity called the Natural Selection Foundation. Established as independent non-profit organizations, both are audited annually.

How to Donate...



If you would like to make a donation towards Natural Selection's mission to make a difference in wildlife conservation and in the lives of people in rural communities, please scan the QR code here, or go to our website and select specific projects to support:

www.naturalselectionfoundation.org

Donations through this platform have a 3% service fee and are tax deductible in the USA.

IF YOU WOULD LIKE TO MAKE A DONATION THROUGH A WIRE TRANSFER, CONTACT donations@naturalselection.travel



Seeing our PROJECTS in ACTION

WE BELIEVE THAT TRAVEL HAS THE POWER TO TRANSFORM.

Aside from the donations we make to conservation on behalf of every guest, we also offer enriching conservation immersion trips and add-ons. Like all our trips, we focus on providing one-of-a-kind, characterful experiences, but these optional immersive experiences leave guests feeling more connected with the conservation landscape and its people.

Our trips will take you deep into the heart of our sustainable safari operations and are an incredible opportunity for you to not only stay in our camps, but also see the significant difference and impact your stay can have on the conservation of wildlife and the lives of the people in nearby villages.

*TO FIND OUT MORE ABOUT OUR CONSERVATION ITINERARIES, AS WELL AS THE
UPCOMING GIRAFFE TAGGING AND DESERT ELEPHANT COLLARING PROJECTS THAT
GUESTS CAN JOIN GO TO: www.naturalselection.travel*

Here's HOW YOU MAKE *A Difference*

WE ARE ALL ABOUT MEANINGFUL EXPERIENCES. SO IMAGINE IF THE SAFARI OF A LIFETIME COULD ACTUALLY CHANGE THE FUTURE OF WILDLIFE AND THE PEOPLE LIVING ALONGSIDE IT. NOW THAT'S PRETTY AMAZING RIGHT?

That's why it is important to us that each guest understands, even before packing their suitcase, that their trip has a direct impact on the environment, and plays an important part in its protection.

Simply by choosing to be at one of our Natural Selection camps or lodges, guests automatically contribute to the conservation and protection of the very wildlife they will see on safari.

This gives our visitors the opportunity to have remarkable experiences while making a difference to the natural world. And it allows us to wholeheartedly embrace our commitment to Africa's wildlife.



TRAVEL *like you* MEAN IT...

It's as simple as that. Travel to make a meaningful difference. Choose to travel with a company like Natural Selection, because we make sure that every visitor's trip counts! Simply by making the choice to go on one of our safaris, you are already leaving a positive impact on conservation and together we can make a significant difference to this beautiful, yet fragile planet of ours.

FOR MORE INFORMATION ON THE
PROJECTS WE SUPPORT, OR IF YOU
WOULD LIKE TO ASSIST FURTHER
IN OUR CONSERVATION OR
COMMUNITY WORK, PLEASE VISIT:
www.naturalselectionfoundation.org

TRAVEL THAT
MATTERS

